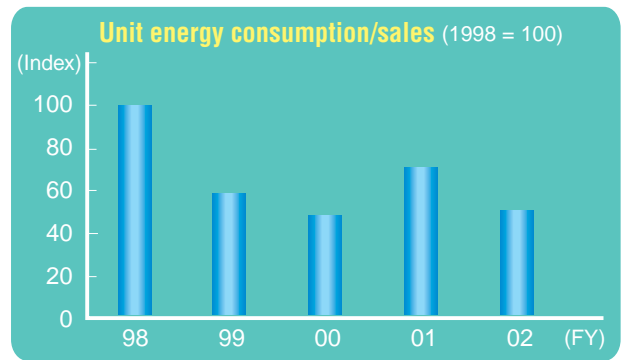




## Efforts at Kawasaki Microelectronics

### Preventing Global Warming

Utsunomiya Works is a modern plant which began operation in October 1990 with a 2300-ton heat storage tank and a large number of inverter-type air conditioning units. In addition to improved control measures, Kawasaki Microelectronics is continuing to introduce energy-saving equipment and retrofit inverter-type equipment. Since 1998, unit energy consumption/sales, which is a control index used in the semiconductor industry, has decreased steadily, reaching about half the 1998 level in 2002.

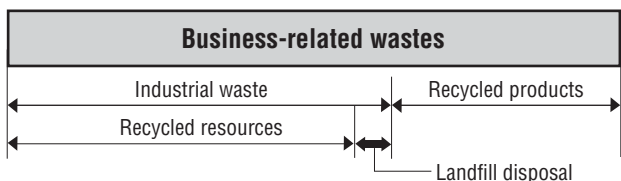


### Reducing Environmental Loads

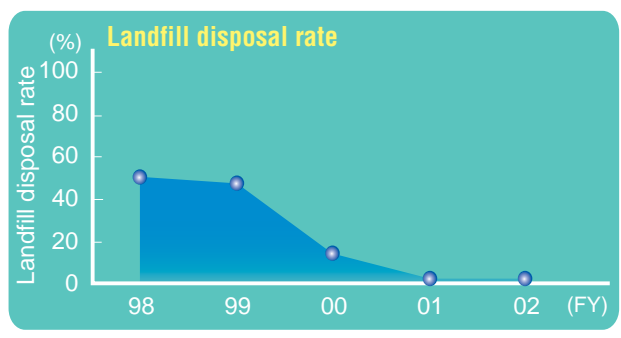
Some industrial chemicals used in semiconductor manufacturing and utilities contain PRTR substances. To lessen these loads, Kawasaki Microelectronics is reducing consumption and switching to substitutes. The company has been especially positive in adopting substitutes, and succeeded in totally phasing-out four PRTR substances in 2002.

### Building a Recycling-oriented Society

Recycling of wastes includes material recycling by separated collection, use of waste oil as fuel, conversion to raw material for cement, etc. Kawasaki Microelectronics's landfill disposal rate in 2002 was less than 2%.



Landfill disposal rate (%) = Landfill disposal / Industrial waste  
 "Landfill disposal" means waste which cannot be recycled as product or resource.



## Efforts at JFE Urban Development

### Preventing Global Warming

The "heat island effect" of abnormally high air temperatures in urban areas has become a problem in recent years. JFE Urban Development stresses environment-friendly urban development measures such as high water-permeability pavement, rooftop greening, etc.

### Building a Recycling-oriented Society

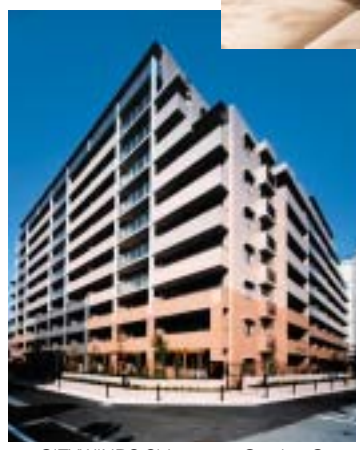
Materials and equipment are selected with priority to environmental considerations, and recycled materials are effectively used by adopting paving materials which contain municipal waste molten slag, etc.

### Reducing Environmental Loads

JFE Urban Development was quick to introduce measures for the "sick house syndrome," and provides pleasant, durable housing using JIS / JAS premium-grade materials and products.



Model room



CITYWINDS Shinagawa Garden Court