

# Partners supporting and growing with the JFE Group

## JFE Systems, Inc.

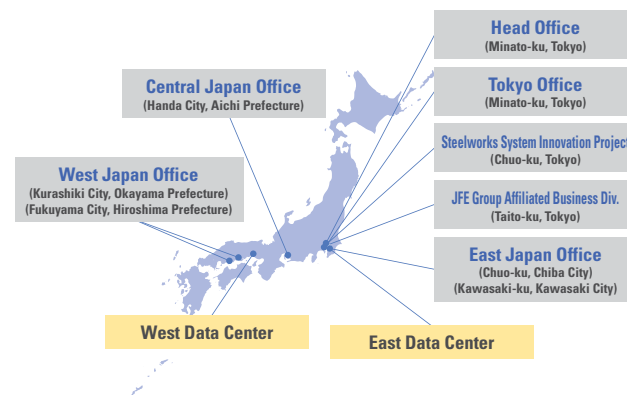
**We have been forged by the history of steel.**  
**We support various operational areas as the JFE Group's systems integrator.**

Our company was created from the spinoff of the functions of the Information Systems Department of JFE Steel Corporation. The history of JFE Steel's growth is the history of our technological innovation. We continue to build systems with continuity to accommodate changes in the future.

### Locations close to JFE Group workplaces

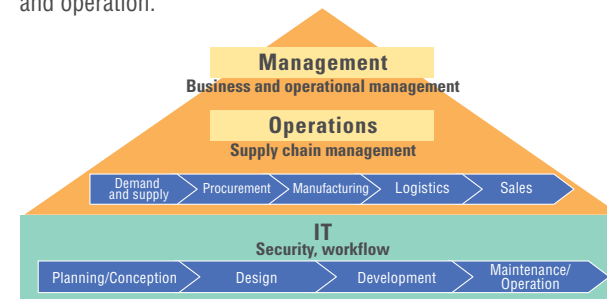
We have offices at JFE Steel's business locations, and support the JFE Group with a total staff of approximately 1,500 employees and partners.

Our systems offer a high degree of reliability, operating 24 hours a day, 365 days a year, for advanced, detailed manufacturing using cutting-edge technologies.



### Capabilities in various operational areas and processes

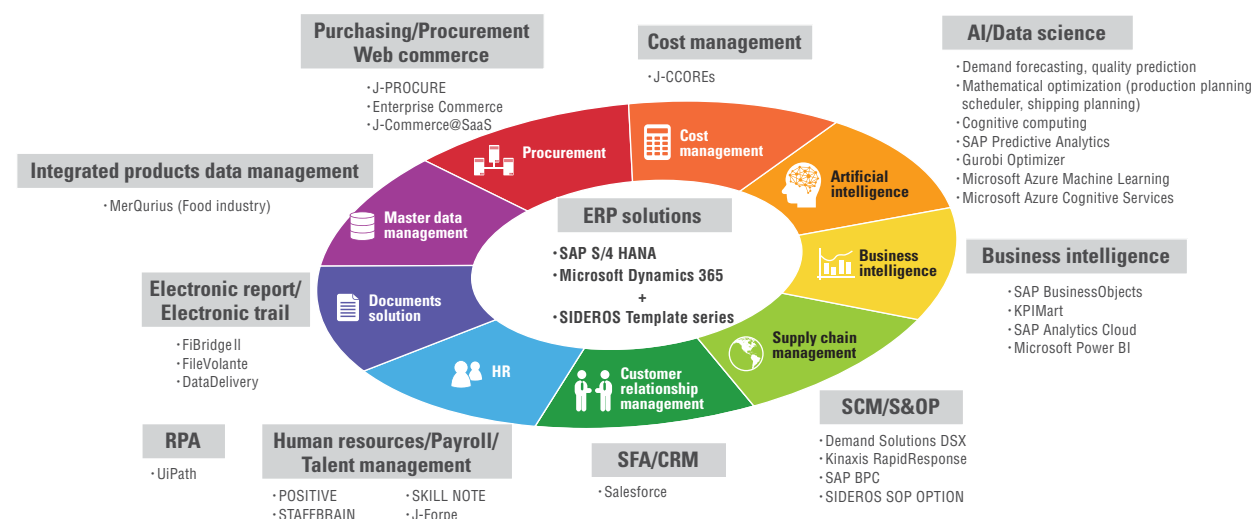
Our systems have supported the steel industry for many years. We have capabilities in many fields: business management, human resources, accounting, planning, procurement, manufacturing management, quality management, logistics, and sales. In addition, as the JFE Group's information systems company, we are responsible for many processes from system planning and conception to design, development, maintenance, and operation.



### Solutions backed by experience

We have been providing various solutions outside the JFE Group by using our know-how of manufacturing foundations which we gained by building steelmaking systems. Our solutions are expanding from SIDEROS as our integrated total solutions brand of ERP and related applications to the latest technological fields including mathematical optimization, demand forecasting, AI, and RPA.

Also, we use our experience and technologies acquired through business with non-JFE customers as we continue to contribute to the JFE Group's sophisticated utilization of IT.



## EXA CORPORATION

**Along with providing data center operations and various solutions,**  
**we are accelerating initiatives related to digital transformation (DX).**

EXA is an information systems company that was established in 1987 from the spinoff of the systems divisions of the former NKK Co., Ltd. (The name is derived from the decimal unit exa (10<sup>18</sup>), which at the time was the largest named unit and represents the pursuit of major dreams and new fields.)

Since receiving a capital injection from IBM Japan Ltd. in 2000, we have been developing an IT business that integrates the JFE Group's user-oriented expertise and IBM's cutting-edge information technology.



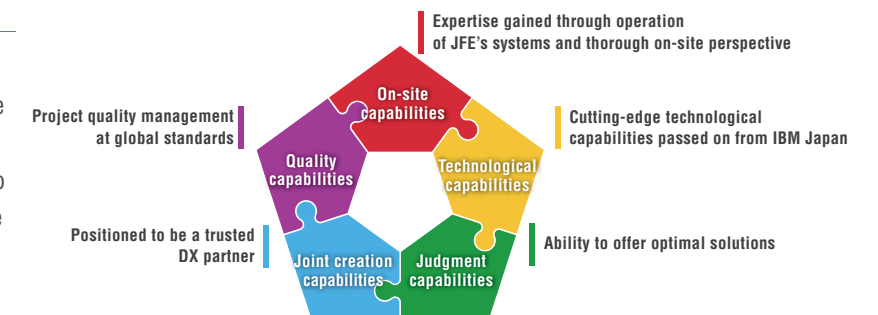
### Corporate Philosophy

**EXA contributes to society's development with cutting-edge information technology and business innovation.**

### EXA's strengths

We emphasize our five capabilities developed through years of experience, covering a diverse range of fields from platform construction and operation to the use of advanced technology, to support customers' businesses in a wide range of industries.\*

\* Industries covered  
 Finance, settlement, public services, manufacturing, materials, energy, engineering/marine, distribution, telecommunications/media

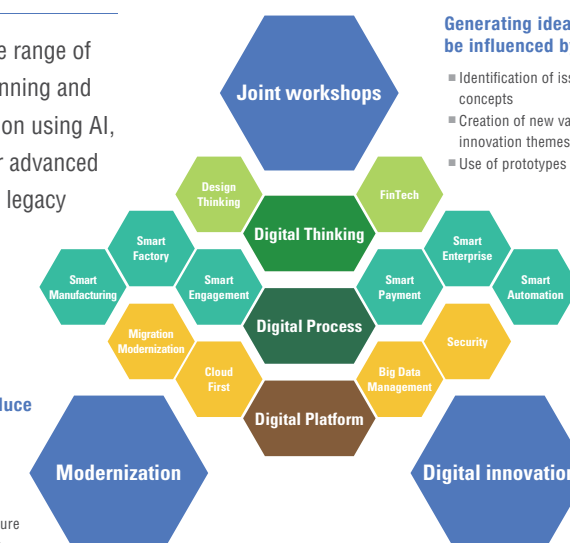


### EXA's DX

We support the JFE Group in a wide range of areas, from joint workshops on planning and conceptualization to digital innovation using AI, the IoT, big data analysis, and other advanced technologies, and modernization of legacy systems.

#### Legacy system realignment to reduce operating load and increase business flexibility and agility

- Upgrade system for standardization, automation, and intelligent enhancement
- Shift to and operation of multi-cloud structure
- Platform construction for digital innovation



#### Generating ideas for true innovation that cannot be influenced by in words

- Identification of issues that need to be resolved based on design concepts
- Creation of new value and new businesses, consideration of innovation themes
- Use of prototypes to confirm implementation concept

#### Using the latest technologies to enhance business competitiveness and create innovation

- Use of AI/IoT/blockchains, etc.
- Use of implementation experience acquired as a member of the JFE Group
- Initiatives in cutting-edge technologies in cooperation with IBM