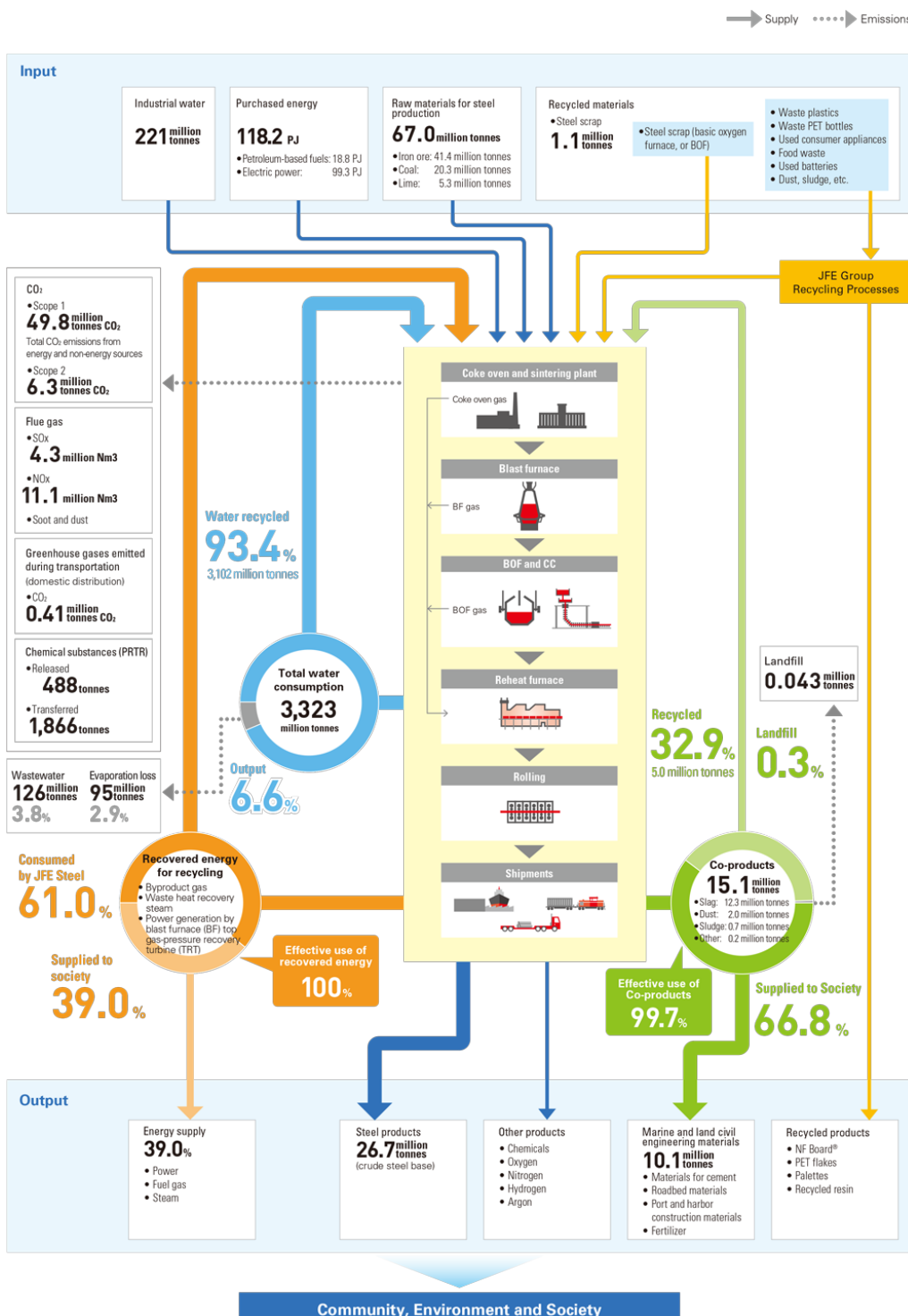


Material Flow

JFE Steel works to reduce the environmental impact of its iron and steelmaking processes, including through the effective use of resources. The company recycles 93.4% of the water it uses for production and uses 99.7% of its co-products, such as ironsteel slag. In addition, 100% of co-product gas generated during production is reused as fuel for reheating slabs, generating power for internal use and supplying power to the public.

JFE Steel (Non-consolidated)





JFE Engineering (Head Office and Works)

Input

| | |
|----------------------------|-----------------------|
| Steel | 39,400 tonnes |
| Energy | |
| • Electric power purchased | 26.3 GWh |
| • Class A heavy oil | 150 kl |
| • Kerosene | 8.5 kl |
| • Light oil | 235 kl |
| • Gasoline | 13.8 kl |
| • City gas | 453,300 tonnes |
| • LPG | 111.4 tonnes |
| Water | 106,000 tonnes |

JFE Engineering

- Tsurumi Works
- Tsu Works

Output and Emissions

| | |
|--------------------------------|------------------------------------|
| Products | 36,600 tonnes |
| CO₂ | |
| • Scope 1 | 3,000 tonnes CO₂ |
| • Scope 2 | 6,700 tonnes CO₂ |
| Waste generated | 1,800 tonnes |
| • Industrial wastes | 1,500 tonnes |
| • General wastes | 313 tonnes |
| Wastewater (ocean only) | 126,000 tonnes |
| Others (PRTR) | 136 tonnes |